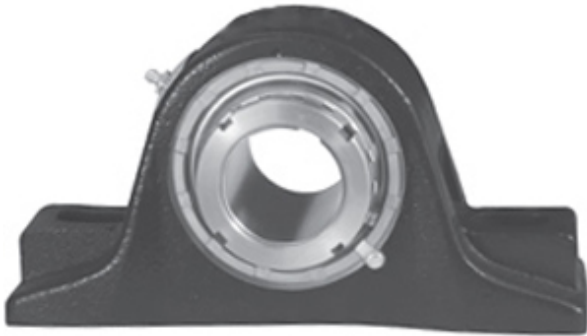




# ISOSTATIC BEARING SALES COMPANT

2.438 Inch | 61.925 Millimeter x 3.75 Inch | 95.25  
Millimeter x 3.5 Inch | 88.9 Millimeter REXNORD  
ZPS9207 Pillow Block Bearings



ZPS9207 Bearing 2D drawings and 3D CAD models

Bearing No. ZPS9207

Category	Pillow Block Bearings
Inventory	0.0
Manufacturer Name	REXNORD
Minimum Buy Quantity	N/A
Weight	18.432
EAN	0698210170509
Product Group	M06288
Number of Mounting Holes	2
Mounting Method	Tapered Adapter Sleeve
Housing Style	2 Bolt Pillow Block
Rolling Element	Spherical Roller Bearing
Housing Material	Cast Iron
Expansion / Non-expansion	Expansion
Mounting Bolts	7/8 Inch
Relubricatable	Yes
Insert Part Number	9207U
Seals	Clearance Seal
Housing Configuration	1 Piece Solid
Inch - Metric	Inch
Other Features	Double Row   Extra Heavy Duty
Long Description	2 Bolt Pillow Block; 2-7/16" Bore; 3-1/2" Base to Center Height; Tapered Adapter Sleeve Mount; Spherical Roller Bearing;



## ISOSTATIC BEARING SALES COMPANT

	Relubricatable; Cast Iron; Clearance Seal; Expansion
Category	Pillow Block
UNSPSC	31171511
Harmonized Tariff Code	8483.20.40.80
Noun	Bearing
Keyword String	Pillow Block
Manufacturer URL	<a href="http://www.rexnord.com">http://www.rexnord.com</a>
Manufacturer Item Number	ZPS9207
Manufacturer Internal Number	6817050
Weight / LBS	40.6
Bolt Spacing Maximum	0 Inch   0Millimeter
d	2.438 Inch   61.925 Millimeter
D	3.75 Inch   95.25 Millimeter
Bolt Spacing Minimum	0 Inch   0Millimeter
B	3.5 Inch   88.9 Millimeter
Nominal Bolt Center to Center	9.8 Inch   248.9 Millimeter
Actual Bolt Center to Center	9.8 Inch   250Millimeter