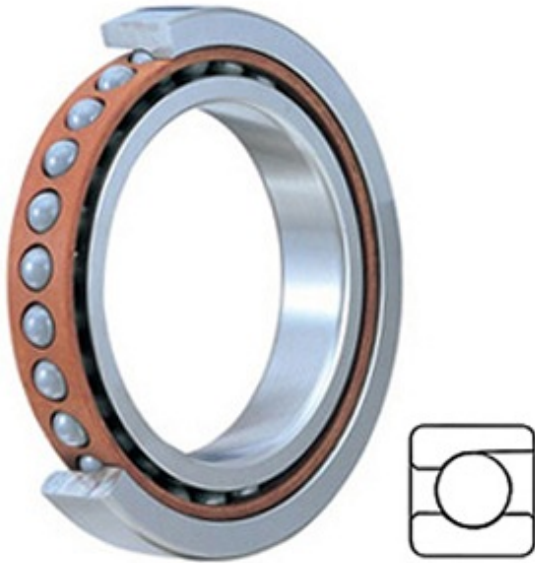




# ISOSTATIC BEARING SALES COMPANT



4.724 Inch | 120 Millimeter x 8.465 Inch | 215 Millimeter x 1.575 Inch | 40 Millimeter TIMKEN 2MM224WI SUL Precision Ball Bearings

Bearing No. 2MM224WI SUL

2MM224WI SUL Bearing 2D drawings and 3D CAD models

Category	Precision Ball Bearings
Inventory	0.0
Manufacturer Name	TIMKEN
Minimum Buy Quantity	N/A
Weight	5.357
EAN	0087796323384
Product Group	B04270
Enclosure	Open
Precision Class	ABEC 7   ISO P4
Material - Ball	Steel
Number of Bearings	1 (Single)
Contact Angle	15 Degree
Preload	Light
Raceway Style	1 Rib Outer Ring
Cage Material	Phenolic
Rolling Element	Ball Bearing
Mounting Arrangement	Universal
Flush Ground	Yes
Inch - Metric	Metric
Other Features	Single Row   Angular Contact   Super High Precision
Long Description	120MM Bore; 215MM Outside Diameter; 40MM Width; Open Enclosure; ABEC 7   ISO P4 Precision;



## ISOSTATIC BEARING SALES COMPANT

	Steel Ball Material; 1 (Single) Bearings; 15 Degree Contact Angle; Phenolic Cage Material; 1 Rib Outer Ring R
Category	Precision Ball Bearings
UNSPSC	31171531
Harmonized Tariff Code	8482.10.50.28
Noun	Bearing
Keyword String	Angular Contact Ball
Manufacturer URL	<a href="http://www.timken.com">http://www.timken.com</a>
Manufacturer Item Number	2MM224WI SUL
Weight / LBS	11.81
d	4.724 Inch   120 Millimeter
B	1.575 Inch   40 Millimeter
D	8.465 Inch   215 Millimeter