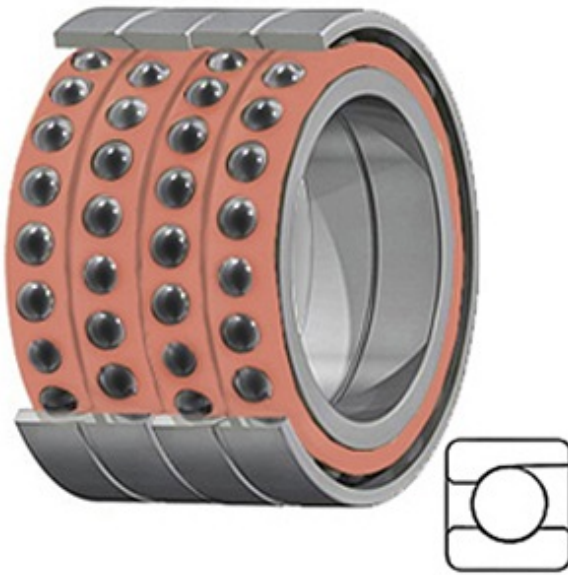




# ISOSTATIC BEARING SALES COMPANT



5.512 Inch | 140 Millimeter x 8.268 Inch | 210 Millimeter x 5.197 Inch | 132 Millimeter TIMKEN 2MMC9128WI QUM Precision Ball Bearings

Bearing No. 2MMC9128WI QUM

2MMC9128WI QUM Bearing 2D drawings and 3D CAD models

Category	Precision Ball Bearings
Inventory	0.0
Manufacturer Name	TIMKEN
Minimum Buy Quantity	N/A
Weight	13.84
EAN	0087796338029
Product Group	B04270
Enclosure	Open
Precision Class	ABEC 7   ISO P4
Material - Ball	Ceramic
Number of Bearings	4 (1 Quadruplex Set)
Contact Angle	15 Degree
Preload	Medium
Raceway Style	1 Rib Outer Ring
Cage Material	Phenolic
Rolling Element	Ball Bearing
Mounting Arrangement	Quadruplex-Universal
Flush Ground	Yes
Inch - Metric	Metric
Other Features	Single Row   Angular Contact   Super High Precision   Hybrid   Corrosion Resistant Ball
Long Description	140MM Bore; 210MM Outside Diameter; 132MM Width; Open Enclosure;



## ISOSTATIC BEARING SALES COMPANT

	ABEC 7   ISO P4 Precision; Ceramic Ball Material; 4 (1 Quadruplex Set) Bearings; 15 Degree Contact Angle; Phenolic Cage Material; 1 Rib
Category	Precision Ball Bearings
UNSPSC	31171531
Harmonized Tariff Code	8482.10.50.28
Noun	Bearing
Keyword String	Angular Contact Ball
Manufacturer URL	<a href="http://www.timken.com">http://www.timken.com</a>
Manufacturer Item Number	2MMC9128WI QUM
Weight / LBS	30.48
d	5.512 Inch   140 Millimeter
D	8.268 Inch   210 Millimeter
B	5.197 Inch   132 Millimeter