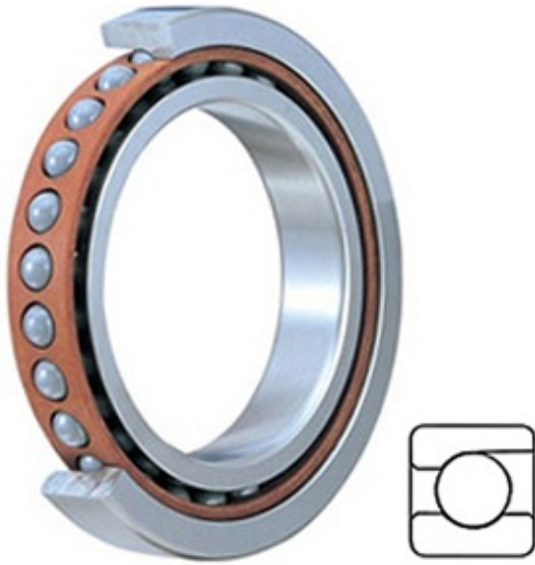




ISOSTATIC BEARING SALES COMPANT



7024 CDGA/P4A Bearing 2D drawings and 3D CAD models

4.724 Inch | 120 Millimeter x 7.087 Inch | 180 Millimeter x 1.102 Inch | 28 Millimeter SKF 7024 CDGA/P4A Precision Ball Bearings

Bearing No. 7024 CDGA/P4A

Category	Precision Ball Bearings
Inventory	0.0
Manufacturer Name	SKF
Minimum Buy Quantity	N/A
Weight	2.242
EAN	7316570853865
Product Group	B04270
Enclosure	Open
Precision Class	ABEC 7 ISO P4
Material - Ball	Steel
Number of Bearings	1 (Single)
Contact Angle	15 Degree
Preload	Light
Raceway Style	1 Rib Outer Ring
Cage Material	Phenolic
Rolling Element	Ball Bearing
Mounting Arrangement	Universal
Flush Ground	Yes
Inch - Metric	Metric
Other Features	Single Row Angular Contact High Precision
Long Description	120MM Bore; 180MM Outside Diameter; 28MM Width; Open Enclosure; ABEC 7 ISO P4 Precision; Steel Ball Material; 1



ISOSTATIC BEARING SALES COMPANT

	(Single) Bearings; 15 Degree Contact Angle; Phenolic Cage Material; 1 Rib Outer Ring R
Category	Precision Ball Bearings
UNSPSC	31171531
Harmonized Tariff Code	8482.10.50.28
Noun	Bearing
Keyword String	Angular Contact Ball
Manufacturer URL	http://www.skf.com
Manufacturer Item Number	7024 CDGA/P4A
Weight / LBS	4.938
d	4.724 Inch 120 Millimeter
B	1.102 Inch 28 Millimeter
D	7.087 Inch 180 Millimeter
bore diameter:	120 mm
radial dynamic load capacity:	114 kN
outside diameter:	180 mm
radial static load capacity:	122 kN
overall width:	28 mm
outer ring width:	28 mm
contact angle:	15 °
maximum rpm:	11000 RPM
row type & fill slot:	Single-Row Non-Fill Slot
finish/coating:	Uncoated
internal clearance:	C0
precision rating:	ABEC 7 (ISO Class 4)
closure type:	Open
fillet radius:	2 mm
bearing material:	Steel
series:	70