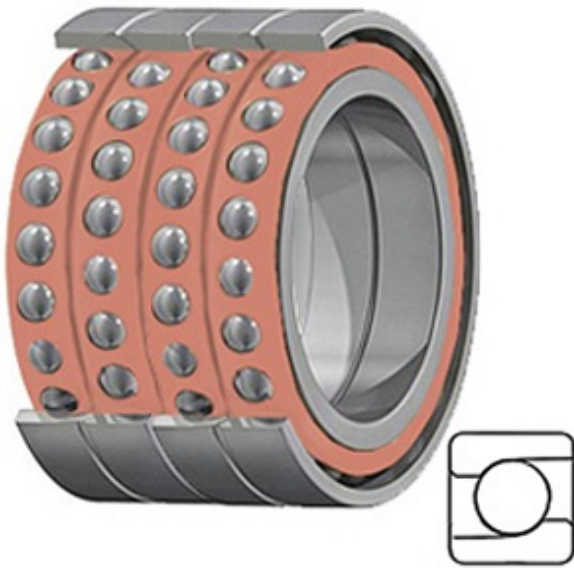




ISOSTATIC BEARING SALES COMPANT



MM25BS62 QUM Bearing 2D drawings and 3D CAD models

0.984 Inch | 25 Millimeter x 2.441 Inch | 62 Millimeter x 2.362 Inch | 60 Millimeter TIMKEN MM25BS62 QUM Precision Ball Bearings

Bearing No. MM25BS62 QUM

Category	Precision Ball Bearings
Inventory	0.0
Manufacturer Name	TIMKEN
Minimum Buy Quantity	N/A
Weight	0.953
EAN	0087796237346
Product Group	B04270
Enclosure	Open
Precision Class	ABEC 7 ISO P4
Material - Ball	Steel
Number of Bearings	4 (1 Quadruplex Set)
Contact Angle	60 Degree
Preload	Medium
Raceway Style	1 Rib Inner Ring and Outer Ring
Cage Material	Phenolic
Rolling Element	Ball Bearing
Mounting Arrangement	Quadruplex-Universal
Flush Ground	Yes
Inch - Metric	Metric
Other Features	Single Row Angular Contact Ball Screw Support Super Precision With Tighter Lateral Eccentricity
Long Description	25MM Bore; 62MM



ISOSTATIC BEARING SALES COMPANT

	Outside Diameter; 60MM Width; Open Enclosure; ABEC 7 ISO P4 Precision; Steel Ball Material; 4 (1 Quadruplex Set) Bearings; 60 Degree Contact Angle; Phenolic Cage Material; 1 Rib Inne
Category	Precision Ball Bearings
UNSPSC	31171531
Harmonized Tariff Code	8482.10.50.28
Noun	Bearing
Keyword String	Angular Contact Ball
Manufacturer URL	http://www.timken.com
Manufacturer Item Number	MM25BS62 QUM
Weight / LBS	2.1
B	2.362 Inch 60 Millimeter
d	0.984 Inch 25 Millimeter
D	2.441 Inch 62 Millimeter